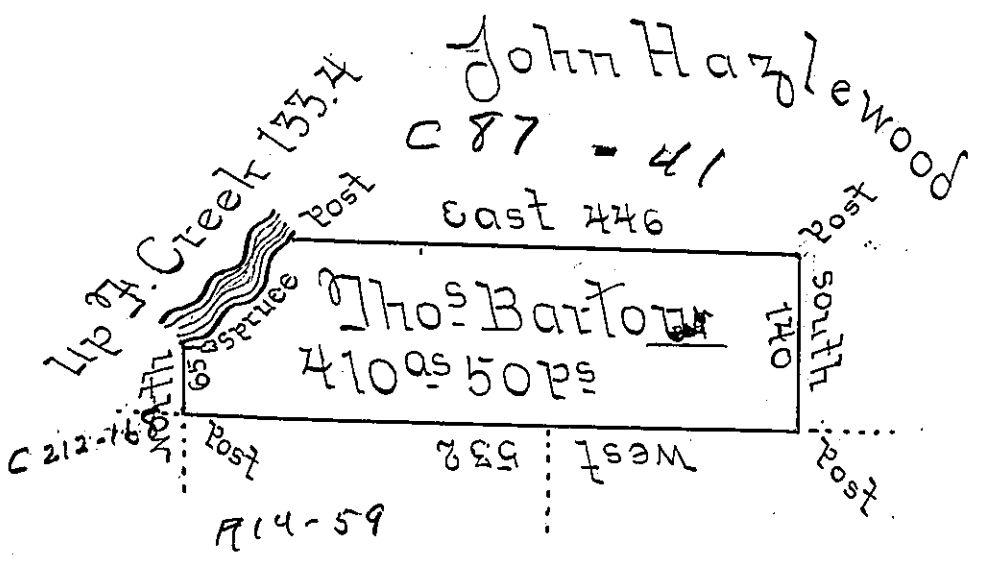


River Courses

- S 84° E. 10
 - East 12
 - N 85½° E. 14
 - N 46° E. 17
 - N 32° E. 14
 - N 24½° E. 19
 - N 51° E. 14
 - N 23½° E. 20
 - N 2½° E. 13.4
- P^s 133.4



Joshua Matlock Edw Pennington

Situate on and adjoining the East Side of French Creek in Allegheny County Containing 410^a 50^ps and Allowance of six P Cent. for Roads & Surveyed 12th Day of Nov 1794 In Pursuance of a Warrant Dated 15th day of ~~Nov~~ April 1792

Wm Power D.H.S.E

To Danl Brodhead Esq }
 Surveyor General }

IN TESTIMONY that the above is a copy of the original remaining on file in the Department of Internal Affairs of Pennsylvania, made conformably to an Act of Assembly approved the 16th day of February, 1833, I have hereunto set my Hand and caused the Seal of said Department to be affixed at Harrisburg, this — second — day of — July — 1901. —

Jameau Latta
 Secretary of Internal Affairs.